

Ventilation  
**TUBES**

summit  
medical

Myringotomy  
**& BLADES**



Distributed by :  
**AZTEC**

Aztec Medical Products  
P 800-223-3859 | F 757-345-3739

**www.aztecmed.com**

CAUTION: Federal (USA) law restricts these devices for sale by or on the order of a physician. Indications, contraindications, warnings and instructions for use can be found in the product labeling supplied with each device.  
©2011 Summit Medical, Inc. All trademarks are that of Summit Medical, Inc. All rights reserved. ENT-3001/A JUL11

## Ventilation Tube Dimensions:

All dimensions are in millimeters.

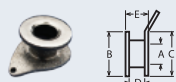
**A** Inner Diameter      **B** Inner Flange Diameter      **C** Outer Flange Diameter      **D** Inter Flange Distance      **E** Total Length

**Order Quantities** — Please indicate a suffix for each order.

— 01 tube per package/ 6 sterile packages per dispenser box  
— 50 sterile packages per dispenser box

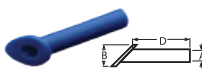
*\*All products are sterile, single-use unless otherwise noted.*

### ANGLED TAB BOBBIN



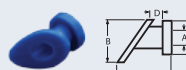
Item No.	Feature	Material	A	B	C	D	E
VT-1421		Titanium	1.27	2.7	2.7	1.0	1.5

### ARMSTRONG BEVELED STRAIGHT SHANK



Item No.	Feature	Material	A	B	C	D	E
VT-0500	7.0mm	S / BL	1.14	2.6		7.0	
VT-0501	7.5mm	FP / BL	1.14	2.6		7.5	
VT-0502	7.0mm	PE / BL	1.14	2.6		12.0	

### ARMSTRONG GROMMET



Item No.	Feature	Material	A	B	C	D	E
VT-0503		FP / BL	1.14	2.5	2.4	1.0	4.0
VT-0507	w/Wire	FP / BL	1.14	2.5	2.4	1.0	4.0
VT-0509		PE / BL	1.09	2.5	2.5	1.0	4.3

### MODIFIED ARMSTRONG GROMMET



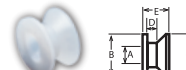
Item No.	Feature	Material	A	B	C	D	E
VT-0508		FP / BL	1.14	3.07	2.59	1.29	3.07

### BAXTER BEVEL BUTTON



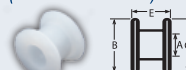
Item No.	Feature	Material	A	B	C	D	E
VT-0602		FP / W	1.27	3.0	3.0		2.2
VT-0603	Mini	FP / W	0.89	2.3	2.3		1.6
VT-0604	w/Wire	FP / W	1.27	3.0	3.0		2.2
VT-0607	Mini	S / BL	0.89	2.3	2.3		1.6

### BEVEL BOBBIN



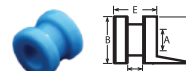
Item No.	Feature	Material	A	B	C	D	E
VT-0608		FP / W	1.14	2.79	2.79	.66	1.75

### COLLAR BUTTON (SHEEHY STYLE)



Item No.	Feature	Material	A	B	C	D	E
VT-1000	w/Wire	FP / W	1.27	2.9	2.9	1.4	2.1
VT-1001		FP / W	1.27	2.9	2.9	1.4	2.1
VT-1002		S / BL	1.27	2.84	2.84	1.43	2.03
VT-1031		TT	1.27	2.9	2.9	1.4	2.0
VT-1035		TT	1.50	2.9	2.9	1.4	2.0

### DONALDSON



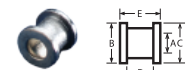
Item No.	Feature	Material	A	B	C	D	E
VT-0100		S / BL	1.14	2.4	2.4	0.8	2.2
VT-0101		S / BL	1.14	2.4	2.4	0.8	2.2
VT-0102	w/Tab	FP / W	1.14	2.4	2.4	0.8	2.2

### FEUERSTEIN SPLIT



Item No.	Feature	Material	A	B	C	D	E
VT-0904	12mm	FP / W	1.14	2.2			12.0

### MINI-GROMMET



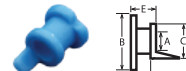
Item No.	Feature	Material	A	B	C	D	E
VT-1425		TT	0.76	1.5	1.5	1.0	1.5

### MINI-TEF



Item No.	Feature	Material	A	B	C	D	E
VT-1602		FP / W	0.89	2.0	1.6	1.0	1.5

### PAPARELLA



Item No.	Feature	Material	A	B	C	D	E
VT-0300	Type I	S / BL	1.14	2.4	2.1	1.1	2.2
VT-0301	Type II	S / BL	1.42	4.4	2.7	1.1	2.2

### POPE BEVELED GROMMET



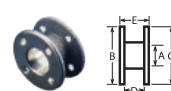
Item No.	Feature	Material	A	B	C	D	E
VT-1504		PE / BL	1.14	2.6	2.6	1.1	1.7

### REUTER BOBBIN WITHOUT HOLES



Item No.	Feature	Material	A	B	C	D	E
VT-1203		FP / W	1.00	2.8	2.8	1.0	1.5
VT-1204		FP / W	1.14	2.8	2.8	1.0	1.5
VT-1207		FP / W	1.00	2.59	2.59	0.97	1.3
VT-1231		TT	1.14	2.8	2.8	1.0	1.4
VT-1232		TT	1.27	2.8	2.8	1.0	1.4

### REUTER BOBBIN WITH HOLES



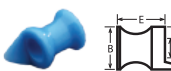
Item No.	Feature	Material	A	B	C	D	E
VT-1200	w/Wire	SS	1.00	2.8	2.8	1.0	1.4
VT-1201		SS	1.00	2.8	2.8	1.0	1.4
VT-1202		FP / W	1.00	2.8	2.8	1.0	1.5
VT-1205		SS	1.14	2.8	2.8	1.0	1.4
VT-1221		TT	1.00	2.8	2.8	1.0	1.4
VT-1223		TT	1.14	2.8	2.8	1.0	1.4
VT-1225		TT	1.27	2.8	2.8	1.0	1.4

### SHAH



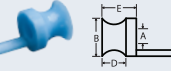
Item No.	Feature	Material	A	B	C	D	E
VT-0802	w/Tab	FP / W	1.14	2.4	2.4		2.5
VT-0803	w/Wire	FP / W	1.14	2.4	2.4		2.5
VT-0804	w/o Tab	FP / W	1.14	2.4	2.4		2.5
VT-0806	w/Tab	PE / BL	1.02	2.4	2.4	.056	2.18

### SHEPARD



Item No.	Feature	Material	A	B	C	D	E
VT-0200	w/Tab	S / BL	1.00	2.4	2.4	1.6	2.4
VT-0201	w/Wire	FP / W	1.14	2.4	2.4	1.6	2.4
VT-0202		FP / W	1.14	2.4	2.4	1.6	2.4
VT-0203	w/Wire	FP / W	1.00	2.4	2.4	1.6	2.4
VT-0204		FP / W	1.00	2.4	2.4	1.6	2.4
VT-0205	Wrapped Wire	FP / W	1.14	2.4	2.4	1.6	2.4
VT-0206	Wrapped Wire	FP / W	1.00	2.4	2.4	1.6	2.4

### SHEPARD WITH TAIL



Item No.	Feature	Material	A	B	C	D	E
VT-0207		PE / BL	1.02	2.34	2.34	.058	2.11

### SPOONER



Item No.	Feature	Material	A	B	C	D	E
VT-0910	w/Wire	PE / BL	1.19	2.6			7.3

### STRAIGHT SHANK



Item No.	Feature	Material	A	B	C	D	E
VT-0900	12mm	FP / W	1.14	2.2			12.0
VT-0901	7mm	FP / W	1.14	2.2			7.0
VT-0902	12mm	FP / W	0.89	2.2			12.0
VT-0903	7mm	FP / W	0.89	2.2			7.0

### TINY TOUMA



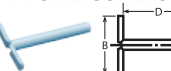
Item No.	Feature	Material	A	B	C	D	E
VT-1601		S / BL	0.89	1.6	2.2	1.3	2.1

### T-TUBE



Item No.	Feature	Material	A	B	C	D	E
VT-0400	12x10	S / BL	1.14	9.8			12.0
VT-0401	5x8	S / BL	1.14	7.9			4.8
VT-0406	5x4	S / BL	1.14	4.1			4.8
VT-0407	8x5.5	S / BL	1.14	5.6			8.0

### T-TUBE SUPERSOFT



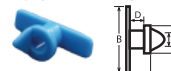
Item No.	Feature	Material	A	B	C	D	E
VT-0409	12x10	S / BL	1.14	9.8			12.0
VT-0410	8x5.5	S / BL	1.14	5.6			8.0

### GROMMET T-TUBE



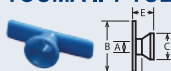
Item No.	Feature	Material	A	B	C	D	E
VT-0403		S / BL	1.27	6.4	3.8	2.4	3.5

### TOUMA T-TUBE



Item No.	Feature	Material	A	B	C	D	E
VT-0405		S / BL	1.14	5.8	2.4	1.3	2.1

### TOUMA II T-TUBE



Item No.	Feature	Material	A	B	C	D	E
VT-0408		S / BL	1.12	5.0	2.59	0.63	2.08

### UMBRELLA



Item No.	Feature	Material	A	B	C	D	E
VT-0700	Type I	S / BL	1.00	2.3	2.3	0.8	3.2
VT-0701	Type II	S / BL	1.50	4.8	3.2	0.8	3.2
VT-0702	Type I w/Wire	S / BL	1.00	2.3	2.3	0.8	3.2

### T-TUBE INSERTER



Facilitates rapid insertion of any length T-Tube. Special push-pin stored in the handle aids in loading T-Tubes.

Item Number	Description	Sale Unit
13-31-40	Non-sterile, reusable	1 Inserter

## MicroEdge™ MYRINGOTOMY BLADES

These hollow-ground blades produce the thinnest edge possible for unsurpassed sharpness. Five blade designs are available to meet your needs and preferences. Blades are available in two versions to fit reusable collet-style or adapter-style handles.

### ARROW BLADE



Double-cutting edge.  
BL-0150\*  
BL-1150\*\* 12 Per Box

### ARMSTRONG BLADE



Double cutting edge.  
BL-0160\*  
BL-1160\*\* 12 Per Box

### BEVEL BLADE



Forward cutting edge.  
BL-0151\*  
BL-1151\*\* 12 Per Box

### GUARISCO BLADE



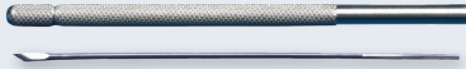
Single thrust design.  
*Designed by Dr. John Guarisco.*  
BL-0170\*  
BL-1170\*\* 12 Per Box

### NARROW ARROW BLADE



Compact double-cutting edge.  
BL-0152\*  
BL-1152\*\* 6 Per Box

### COLLET-STYLE BLADE HANDLE Stainless Steel



For use with collet-style blades indicated with (\*).  
BL-0425 Non-sterile, reusable 1 Per Box

### ADAPTER-STYLE BLADE HANDLE Stainless Steel



For use with adapter-style blades indicated with (\*\*).  
BL-1425 Non-sterile, reusable 1 Per Box

*\*All products are sterile, single-use unless otherwise noted.*



Twists into  
adapter-style handle  
or common  
flat blade handle  
(if collet is removed)

## FLAT STOCK MYRINGOTOMY BLADES AND KNIVES

Blades require flat stock handle while knives have a molded handle.

### ADULT LANCE REVERSE BLADE



BL-2003 6 Per Box

### ADULT LANCE BLADE



BL-2001 6 Per Box

### JUVENILE LANCE BLADE



BL-2006 6 Per Box

### JUVENILE SPEAR BLADE



BL-2004 6 Per Box

### TYMpanoplasty ANGLED BLADE (60°)



BL-2008 6 Per Box

### TYMpanoplasty STRAIGHT BLADE (2.5mm)



BL-2009 6 Per Box

### SICKLE BLADE



BL-2010 6 Per Box

### ADULT LANCE KNIFE



BL-2002 6 Per Box

### JUVENILE LANCE KNIFE



BL-2007 6 Per Box

### JUVENILE SPEAR KNIFE



BL-2005 6 Per Box

### SICKLE KNIFE



BL-2011 6 Per Box

### FLAT STOCK HANDLE Stainless Steel



For use with flat stock blades.  
BL-2024 Non-sterile, reusable 1 Per Box

*\*All products are sterile, single-use unless otherwise noted.*